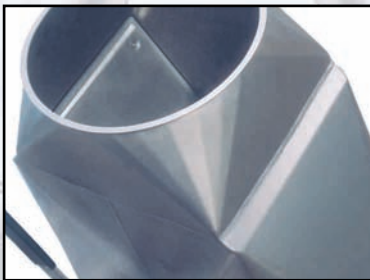


Jacob 2-Way Distributors

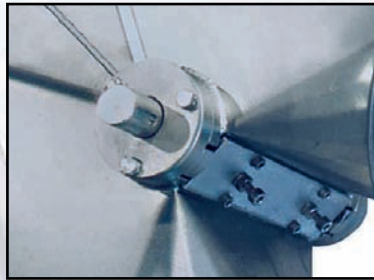
Top Quality At Competitive Prices!

- Designed for low pressure or vacuum conveying systems.
- Available with 45 degree outlets or 60 degree outlets.
- Available 6" (150mm) up to 25" (630mm) dia.
- Available in mild steel & stainless steel.
- Sanitary design available.



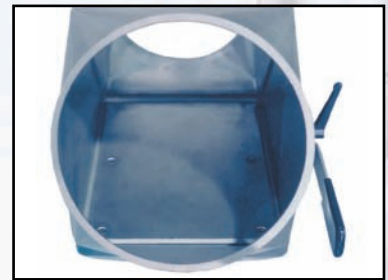
Recessed Ledge

- Recessed ledge for a positive flap seal.
- Eliminates gasket abrasion.
- Reduces product deformation.



Removable Shaft Assembly

- Removable inner flap assembly for cleaning and maintenance.
- Silicon gasket is FDA approved, heat resistant up to 450 F (230 °C), other gasket material available.
- Replaceable gasket.



Increased Angle Of Flow

- Shaft positioned between pant legs.
- Increases angle of flow.
- Reduces product deformation.

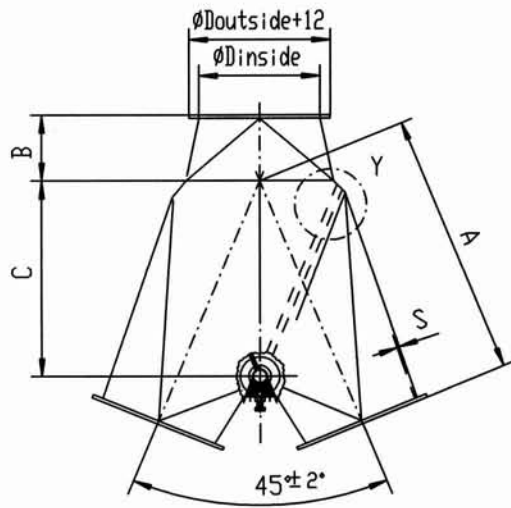


JACOB

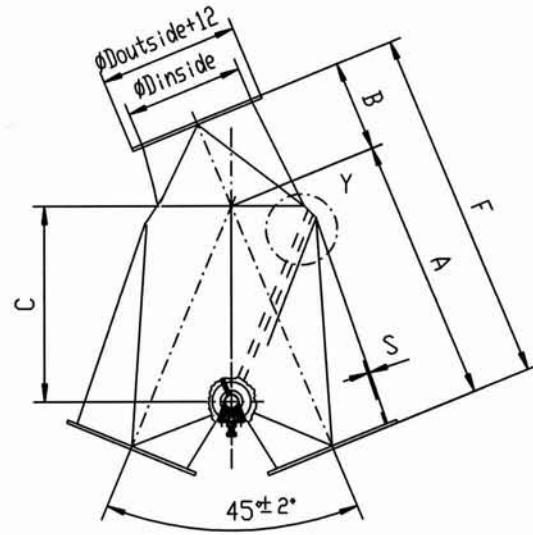
Modular Tubing Systems

Jacob Tubing. L.P.
3948 Willow Lake Blvd. • Memphis, TN 38118
Mailing Address:
P.O. Box 754000 • Memphis, TN 38175
Phone: 901-566-1110 • Fax: 901-566-1910
www.jacob-tubing.com

Symmetrical version

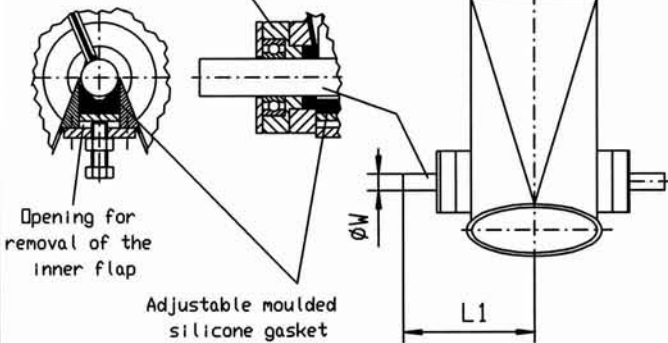


Asymmetrical version



Safety advice DIN 34

Shaft at both sides with ball bearings and silicone ring seal.



Installation position :

For gravity flow as shown.
For pneumatic conveying, any position.

Applications :

For gravity flow and light conveying.

Please inquire for special applications.

All dimensions given in mm

Ø Tube		100	120	150	175	200	250	300
symmetrical version	A			315	350	400	480	570
	B			75	90	105	130	160
	C			221	255	289	356	426
asymmetrical version	A			315	350	400	480	570
	B			115	125	140	170	210
	C			221	255	289	356	426
	F			430	475	540	650	780
ØD inside				149	174	199	249	299
s				2	2	2	2	2
W				20	20	20	30	30
L1				135	151	160	188	213
weight in kg								

Description: 2-way distributor 45° Ø150-Ø300, without actuation

Date: 10. 09. 2001
Drawing-No.: 7/175
Index: 2