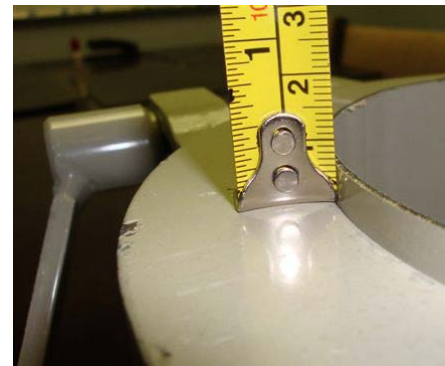


## INSTRUCTIONS FOR FLANGING TOOL

STEP 1: Determine what the length of the tube needs to be then add ¼" (6mm) for each end that requires a JACOB connection lip.



STEP 2: Cut the tube to the length that was determined using step #1. This cut will need to be straight to assure that the flange will be correctly formed.



STEP 3: Clamp the flanging tool around the end of the tube that was cut leaving ¼" (6mm) of the tube protruding from the flanging tool. Be sure to tighten the tool around the tube accordingly to assure the tube does not slip during the flanging process.

STEP 4: Using a steel hammer, bend back the protruding ¼" (6mm) of tube flat against the surface of the flanging tool until the entire flange is formed.



STEP 5: Remove tool from tube and inspect the flange to make sure it is straight.

**NOTE: Each tube size has its own flanging tool. One flanging tool will not work for all diameters.**